

## COMMERCIAL NON-DAMPERED GAS WATER HEATER

**3-Year Tank Warranty**  
**1-Year Parts Warranty**

- **2" Non-CFC Foam Insulation**  
*Foam insulation saves fuel by retarding heat loss.*
- **Fused Ceramic Shield**  
*Applied under pressure and fired at 1600°F to completely cover the tank interior. This provides a tough interior surface for storage tanks and maximum protection against the wearing effects of high-volume and high-temperature hot water.*
- **Anode Rod**  
*Promotes longer tank life through even distribution for protection against corrosion of tank interior.*
- **Factory-Installed Temperature and Pressure Relief Valve**
- **Design Certified**  
*By CSA International for up to 180°F as an automatic storage heater in compliance with the latest edition of ANSI Z-21.10.1 or .3-CSA 4.1 or .3 standards.*
- **Dual Cleanout Openings 75- and 100-gallon models**
- **California (CEC) and New York**  
*Energy requirements met or exceeded.*
- **Builder Block Concept**  
*Enables multiple heaters of equal size and input manifolded together to operate as one total system. This concept allows the system to be maintained and serviced without shutting down the complete system.*



**MADE IN USA** 

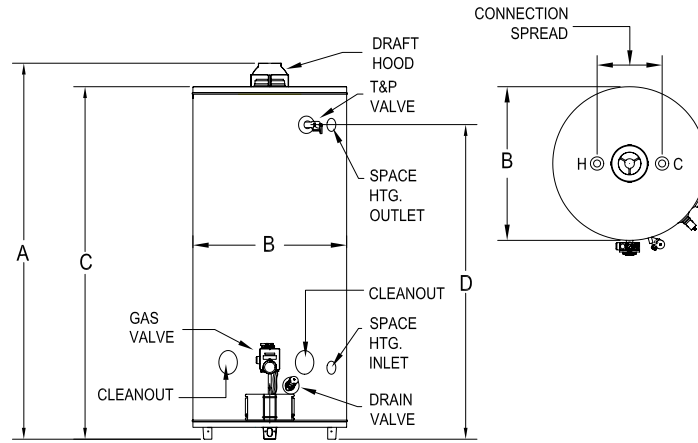
### **3-Year Limited Tank Warranty**

*Heavy gauge steel is automatically formed, rolled and welded to assure continuous seams for Fused Ceramic Shield lining. Each tank is triple tested to ensure quality.*

### **1-Year Parts Warranty**

*Original factory parts warranted for 1 year.*

*For complete warranty information consult the written warranty of American Water Heater Company at (800) 999-9515.*



## Commercial Gas Non-Dampered

Dimensions on all charts shown in inches.

MODEL NUMBER	GAL. CAP.	BTU INPUT NATURAL	BTU INPUT PROPANE	GPH RECOVERY NATURAL	GPH RECOVERY PROPANE	HEIGHT TOP OF VENT A	JACKET DIAM. B	HEIGHT TOP OF HEATER C	VENT SIZE	TOP NIPPLE SIZE	TOP CONN. SPREAD	HEIGHT SPACE HEAT OUT	HEIGHT SPACE HEAT IN	HEIGHT GAS CONN.	SIZE GAS CONN.	HEIGHT T&P OPEN. D	T&P OPEN	APPROX. SHIP WEIGHT
CFG32-50T50-4NOV*	50	50,000	47,000	46	43	60 1/4	22	57	4	3/4	8	—	—	12 1/2	1/2	50 1/2	3/4	161
CG32-75T75-4NV**	75	75,100	75,100	73	73	63 1/2	26	60	4	1	11	53 1/4	12 1/2	12 1/2	1/2	53 1/4	3/4	243
CG32-100T77-4NV**	100	77,000	75,100	76	74	68 1/2	28	64 1/2	4	1 1/4	16	58 1/4	12 1/2	12 1/2	1/2	58 1/4	3/4	340

\*FVIR compliant. \*\*3/4" space heating connections. Limited warranty on tank and parts. Complete details in manual. To order propane models, change "N" or "NO" suffix to "P". Dimensions and specifications subject to change without notice in accordance with our policy of continuous product improvement.

RECOVERY IN GALLONS AT VARIOUS TEMPERATURE RISES													
MODEL NUMBER	GAS TYPE	BTU INPUT	TEMPERATURE RISE										
			40°	50°	60°	70°	80°	90°	100°	110°	120°	130°	140°
CFG32-50T50-4N	NATURAL	50,000	115	92	77	66	58	51	46	42	38	35	33
CFG32-50T50-4P	PROPANE	47,000	108	87	72	62	54	48	43	39	36	33	31
CG32-75T75-4N/P	NAT/PRO	75,100	182	146	121	104	91	81	73	66	61	56	52
CG32-100T77-4N	NATURAL	77,000	189	151	126	108	95	84	76	69	63	58	54
CG32-100T77-4P	PROPANE	75,100	184	147	123	105	92	82	74	67	61	57	53

### Specification

Furnish and install, where indicated, in accordance with manufacturer's instructions and in compliance with all rules and regulations of authorities having jurisdiction.

Commercial gas-fired water heater(s) shall be American® Model \_\_\_\_\_ as manufactured by American Water Heater Company, designed to burn \_\_\_\_\_ gas and certified by CSA International for commercial water heater(s) having delivery capabilities of 180° F water, and meet or exceed all applicable energy codes. Water heater(s) shall have a storage capacity of \_\_\_\_\_ gallons, a minimum input rating of \_\_\_\_\_ Btuh and a recovery rating of \_\_\_\_\_ GPH at a \_\_\_\_\_°F temperature rise. Water heater(s) steel tank is hydrostatic tested at 300 PSI having a working pressure of 150 PSI and shall have a Fused Ceramic Shield internally lined tank applied under pressure and fired at 1600°F allowing for maximum protection. Water heater(s) shall be provided with an AGA/CSA/CGA approved temperature and pressure relief valve factory installed and anodes for cathodic protection. The outer jacketing shall have a baked enamel finish. The tank shall be foam insulated with an EPA-approved, non-CFC material. Water heater(s) shall be manufactured in United States of America and shall have a 3-year limited tank warranty against corrosion as outlined in the written warranty. Fully illustrated operation, installation and service manual included with unit.

### Order Entry and Sales

P.O. Box 4056, 500 Princeton Road  
Johnson City, TN 37602-4056  
(800) 937-1037  
(800) 581-7224 fax

### Product Service and Support

P.O. Box 1597, 500 Princeton Road  
Johnson City, TN 37605-1597  
(800) 456-9805  
(800) 999-5210 fax

**Distributed By**